

A **ST - T13/25N**
Rt °C/W 25
 Aluminium, black anodized
 Other dimensions on request

TECNODAL
www.tecnodal.it

B **ST - T13/32N**
Rt °C/W 21
 Aluminium, black anodized
 Other dimensions on request

TECNODAL
www.tecnodal.it

C **ST - T15**
Rt °C/W 21
 Aluminium, black anodized

TECNODAL
www.tecnodal.it

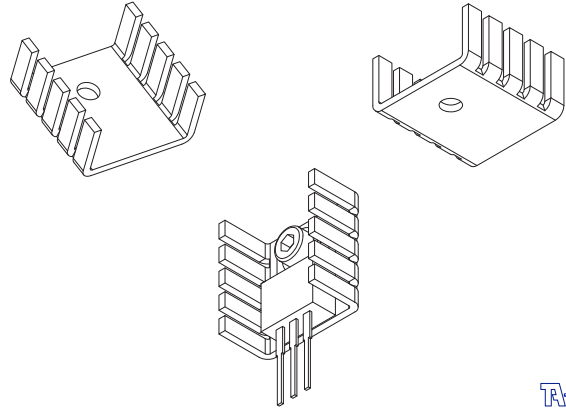
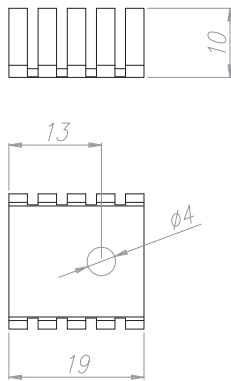
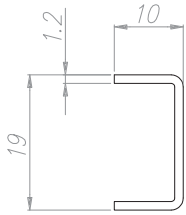
D **ST - T19**
Rt °C/W 55
 Aluminium, black anodized
 Other dimensions on request

TECNODAL
www.tecnodal.it

ST - TE19

Rt °C/W 55

Aluminium, black anodized



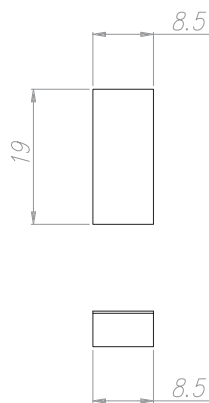
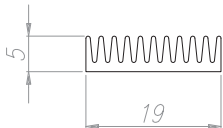
TECNOAL
www.tecnoal.it

A

ST - K19/8.5

Rt °C/W 81

Aluminium, black anodized
Other dimensions on request



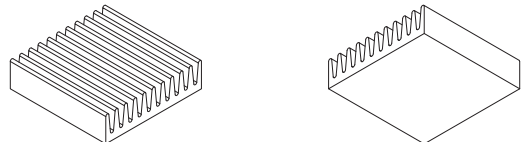
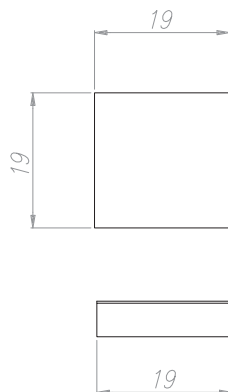
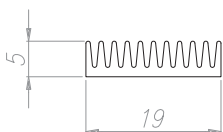
TECNOAL
www.tecnoal.it

B

ST - K19/19

Rt °C/W 46

Aluminium, black anodized
Other dimensions on request



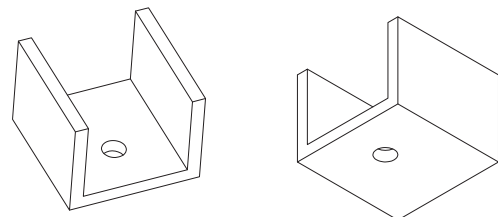
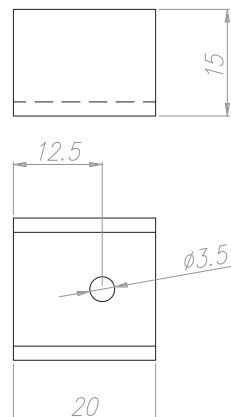
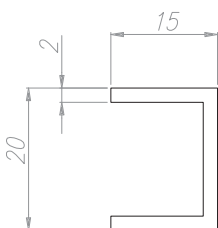
TECNOAL
www.tecnoal.it

C

ST - T20

Rt °C/W 21

Aluminium, black anodized



TECNOAL
www.tecnoal.it

D

A **ST - T22**
Rt °C/W 22
 Aluminium, black anodized

Technical drawing of component ST-T22. It includes a side view showing a height of 22 and a top flange width of 1.2. A top view shows a total width of 36, a central hole diameter of $\phi 3.5$, and a distance of 20 from the hole to the right edge. A detail view shows a thickness of 5. A perspective view shows the component's L-shaped profile.

TECNDAL
www.tecnoal.it

B **ST - T24A**
Rt °C/W 18
 Aluminium, black anodized

Technical drawing of component ST-T24A. It includes a side view showing a height of 10 and a top flange width of 1.5. A top view shows a total width of 25, a central hole diameter of $\phi 3.5$, and a distance of 20 from the hole to the right edge. A detail view shows a thickness of 10. A perspective view shows the component's L-shaped profile. A blue label reads "ONLY ON REQUEST".

TECNDAL
www.tecnoal.it

C **ST - T25A**
Rt °C/W 18
 Aluminium, black anodized

Technical drawing of component ST-T25A. It includes a side view showing a height of 15 and a top flange width of 2. A top view shows a total width of 25, a central hole diameter of $\phi 3.5$, and a distance of 20 from the hole to the right edge. A detail view shows a thickness of 20. A perspective view shows the component's L-shaped profile with a serrated top edge.

TECNDAL
www.tecnoal.it

D **ST - T25C**
Rt °C/W 18
 Aluminium, black anodized

Technical drawing of component ST-T25C. It includes a side view showing a height of 15 and a top flange width of 2. A top view shows a total width of 25, a central hole diameter of $\phi 3.5$, and a distance of 14.5 from the hole to the right edge. A detail view shows a thickness of 20. A perspective view shows the component's L-shaped profile with a serrated top edge.

TECNDAL
www.tecnoal.it

ST - T25D
 Rt °C/W 9
 Aluminium, black anodized

2 HOLES $\varnothing 3.5$

ONLY ON REQUEST

TECNOAL
www.tecnoal.it

A

ST - TE25
 Rt °C/W 12.5
 Aluminium, black anodized

$\varnothing 4$

TECNOAL
www.tecnoal.it

B

ST - T28T
 Rt °C/W 10
 Aluminium, black anodized

$\varnothing 3.5$

TECNOAL
www.tecnoal.it

C

ST - TEA28
 Rt °C/W 15
 Aluminium, black anodized

2 HOLES $\varnothing 3.5$

ONLY ON REQUEST

TECNOAL
www.tecnoal.it

D

A **ST - TE28**
Rt °C/W 14
 Aluminium, black anodized

Technical drawing of ST-TE28 heat sink showing dimensions: 12, 1, 24, 35, 5.5, 2.5, 15, 5, 12. Includes 3D perspective views and a blue label: **ONLY ON REQUEST**. The Tecnodal logo and website www.tecnodal.it are in the bottom right.

B **ST - T29**
Rt °C/W 17
 Aluminium, black anodized

Technical drawing of ST-T29 heat sink showing dimensions: 11.5, 29, 17, 3, 25, 6.5, 10.6, 29, 19.5, 11.5, 3.5. Includes 3D perspective views and the Tecnodal logo and website www.tecnodal.it in the bottom right.

C **ST - T38**
Rt °C/W 9.5
 Aluminium, black anodized

Technical drawing of ST-T38 heat sink showing dimensions: 20, 38, 22, 3.5, 36, 4.5, 5, 19.3, 19, 20. Includes 3D perspective views and the Tecnodal logo and website www.tecnodal.it in the bottom right.

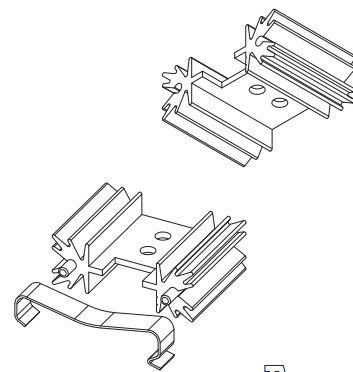
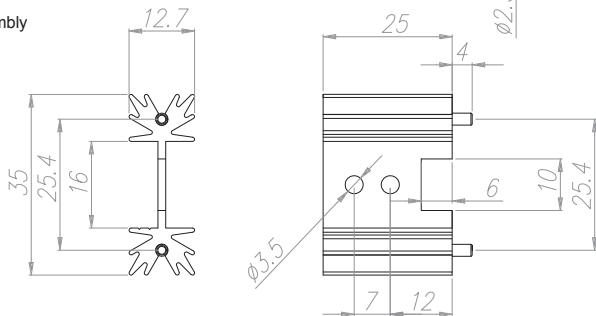
D **ST - 45FM-NEW**
Rt °C/W 7.7
 Aluminium, black anodized

Technical drawing of ST-45FM-NEW heat sink showing dimensions: 25, 43, 35, 2, 35, 43, 1.7, 7.1, 10.2, 7.7, 4.2, 5.3, 4.5, R1.5, 11, 4, 4. Includes 3D perspective views and the Tecnodal logo and website www.tecnodal.it in the bottom right.

ST - TEA35/25

Rt °C/W 14

Aluminium, black anodized
Available with pins for PCB assembly



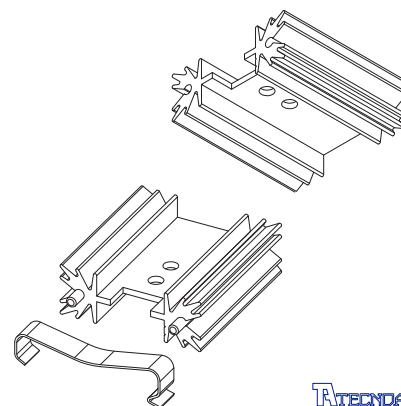
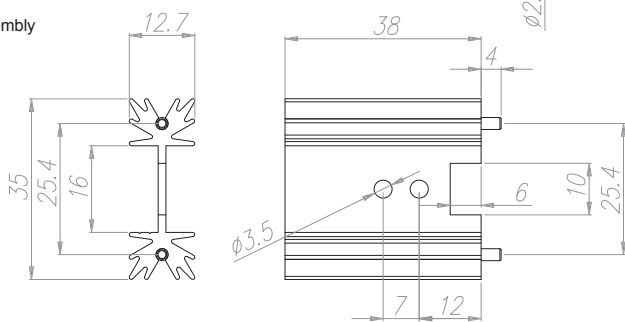
TECNODAL
www.tecnodal.it

A

ST - TEA35/38

Rt °C/W 11.5

Aluminium, black anodized
Available with pins for PCB assembly



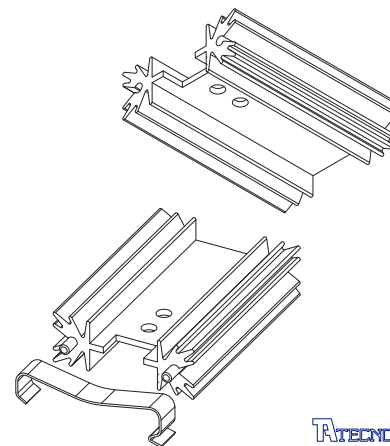
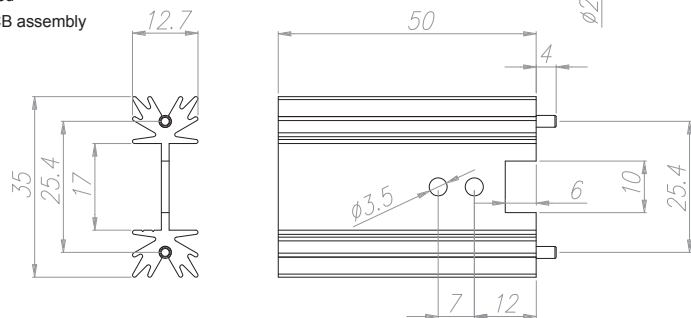
TECNODAL
www.tecnodal.it

B

ST - TEA35/50

Rt °C/W 8.5

Aluminium, black anodized
Available with pins for PCB assembly

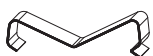


TECNODAL
www.tecnodal.it

C

MOLLE DI FISSAGGIO SPRING CLIPS

MOLLA TEA35

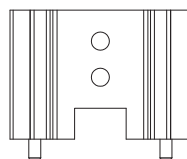


Materiale acciaio inox

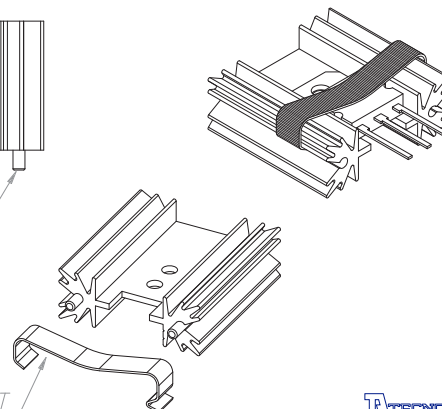
MOLLA TEA35A



Materiale acciaio armonico nichelato



PIN ON REQUEST



SPRING ON REQUEST

TECNODAL
www.tecnodal.it

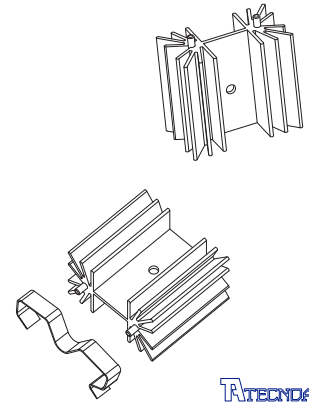
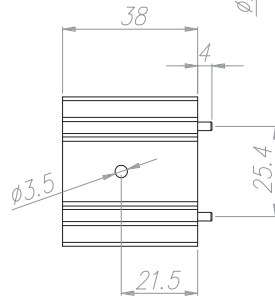
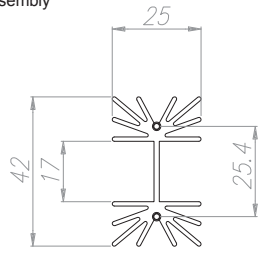
D

A

ST - TEA40/38

Rt °C/W 8

Aluminium, black anodized
Available with pins for PCB assembly



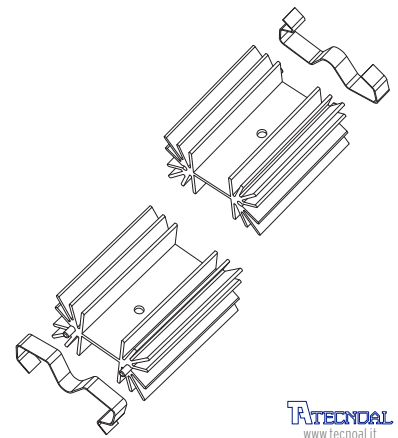
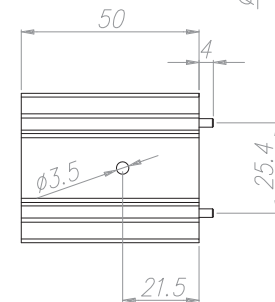
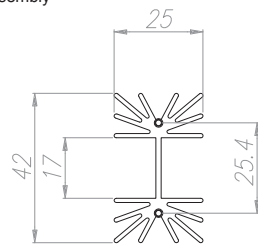
TECNODAL
www.tecnodal.it

B

ST - TEA40/50

Rt °C/W 6

Aluminium, black anodized
Available with pins for PCB assembly



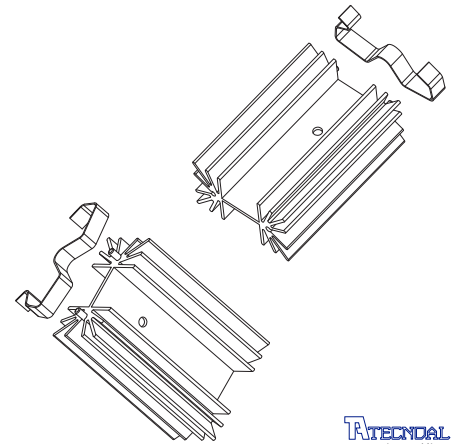
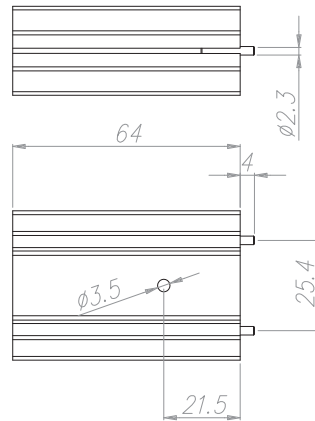
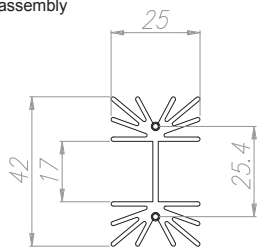
TECNODAL
www.tecnodal.it

C

ST - TEA40/64

Rt °C/W 5

Aluminium, black anodized
Available with pins for PCB assembly



TECNODAL
www.tecnodal.it

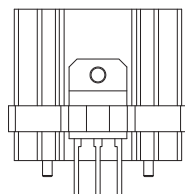
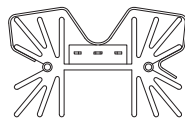
D

MOLLE DI FISSAGGIO SPRING CLIPS

MOLLA TEA40

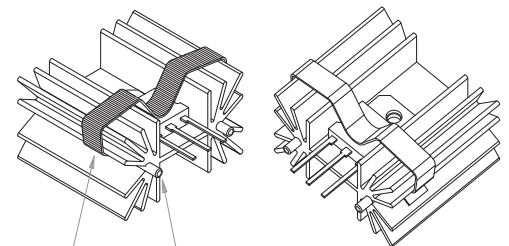


Materiale acciaio armonico nichelato



SPRING ON REQUEST

PIN ON REQUEST



TECNODAL
www.tecnodal.it

ST - TEA45/25

Rt °C/W 8.2

Aluminium, black anodized
Available with pins for PCB assembly

A

TECNDAL
www.tecnoal.it

ST - TEA45/38

Rt °C/W 7

Aluminium, black anodized
Available with pins for PCB assembly

B

TECNDAL
www.tecnoal.it

ST - TEA45/50

Rt °C/W 6.2

Aluminium, black anodized
Available with pins for PCB assembly

C

TECNDAL
www.tecnoal.it

MOLLE DI FISSAGGIO SPRING CLIPS

MOLLA TEA45

Materiale acciaio inox

PIN ON REQUEST

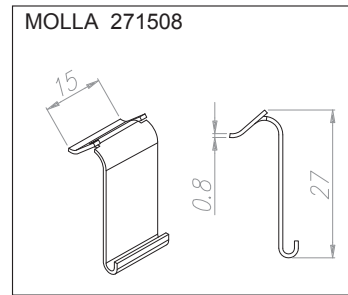
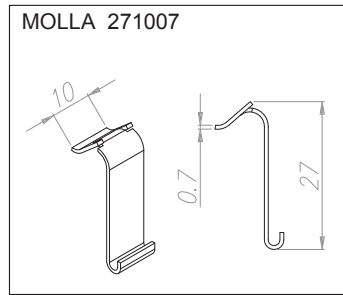
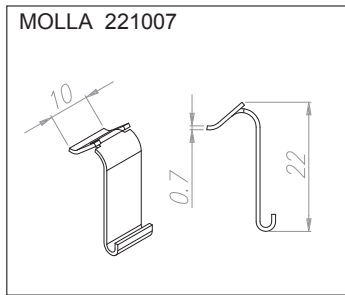
D

SPRING ON REQUEST

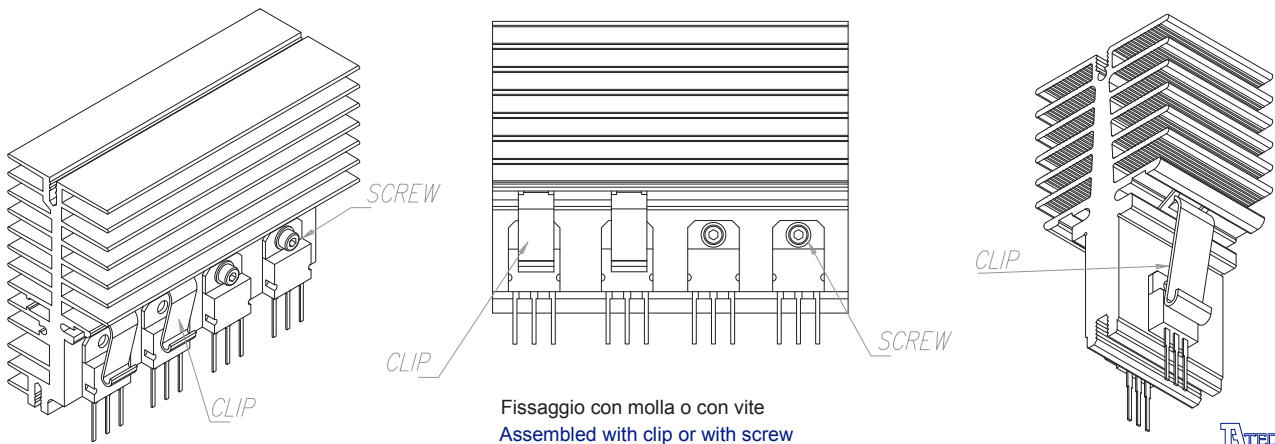
TECNDAL
www.tecnoal.it

A

MOLLE PER IL FISSAGGIO DEL COMPONENTE SU DISSIPATORI SERIE TECNOCLIP
CLIPS FOR ASSEMBLY ELECTRONICS COMPONENTS ON HEATSINKS SERIES TECNOCLIP

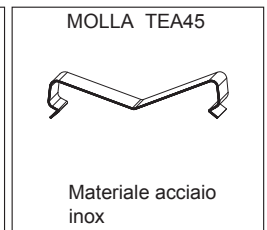
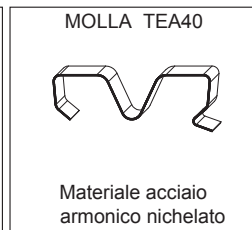
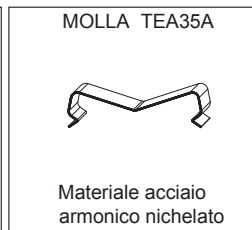
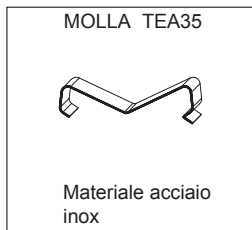
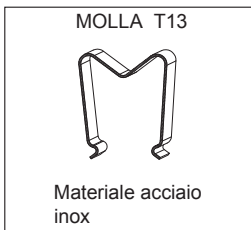


B



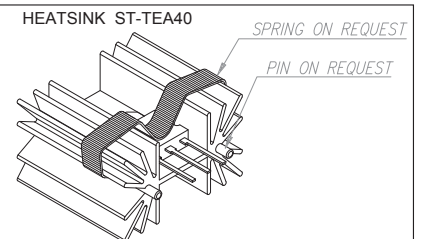
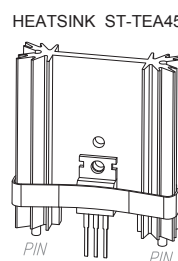
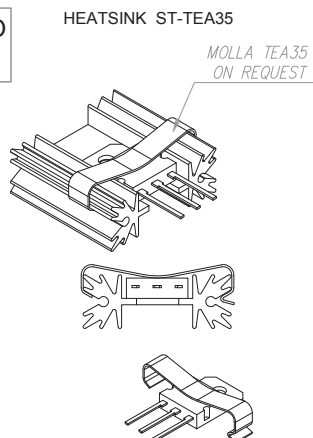
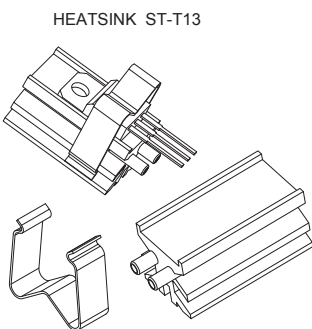
C

MOLLE PER IL FISSAGGIO DEL COMPONENTE SU DISSIPATORI STANDARD
CLIPS FOR ASSEMBLY ELECTRONICS COMPONENTS ON STANDARD HEATSINKS



D

MOLLE: ESEMPI DI UTILIZZO
CLIP: EXAMPLES OF USING



Accessoristica

Tecnoal offre oltre ad una ampia gamma di dissipatori adatti ai più svariati utilizzi, anche molti accessori impiegati in ambito elettronico.

Accessories

Tecnoal can supply a big series of accessories for electronic employing.

**DISTANZIALI M3
SPACER M3**

Materiale ottone nichelato esagono 6
Material nickel plated brass hexagon 6

A

MASCHIO-FEMMINA M3
MALE-FEMALE M3

H							
5	7	10	12	15	20	25	30

FEMMINA-FEMMINA M3
FEMALE-FEMALE M3

H					
5	10	15	20	25	30

Altre dimensioni a richiesta
Other dimensions on request

TECNODAL
www.tecnoal.it

**DISTANZIALI M4
SPACER M4**

Materiale ottone nichelato esagono 6
Material nickel plated brass hexagon 6

B

MASCHIO-FEMMINA M4
MALE-FEMALE M4

H				
10	15	20	25	30

FEMMINA-FEMMINA M4
FEMALE-FEMALE M4

H				
10	15	20	25	30

Altre dimensioni a richiesta
Other dimensions on request

TECNODAL
www.tecnoal.it

**GUIDE A SFERE PER CASSETTO RACK
BALL BEARING SLIDES FOR RACK**

C

h (GUIDA CHIUSA)/(CLOSE SLIDE)

76.5

8.5

SCORRIMENTO-SLIDING

H (GUIDA APERTA)/(OPEN SLIDE)

SCORRIMENTO-SLIDING

Tecnoal propone delle guide scorrevoli ottenute mediante il montaggio di due profili estrusi in alluminio che conferiscono particolare rigidità e robustezza all'insieme. Essendo ricavate da barre, la lunghezza della guida è a richiesta del cliente.

Tecnoal can supply on request ball bearing slides in any lenght including all machining and assembly.

TECNODAL
www.tecnoal.it

A **MAN L**

Aluminium, raw, blak anodized, silver anodized
Dimension H on request

Utilizzato come maniglia

B

**MICHE MINERALI NATURALI
NATURAL MINERAL MICAS (MICA INSULATOR)**

Foglio elastometro termoconduttivo SIL-PAD 400 dimensioni 12" x 12" spessore .007 MIN
Thermoconductive elastometer sheet SIL-PAD 400 (12"x12") thickness .007 MIN

C

**GRASSO TERMOCONDUTTIVO
THERMAL CONDUCTOR GREASE**

CONFEZIONE DA 2 Kg. PACKAGE

CONFEZIONE DA 200 g. PACKAGE

UTILIZZO
È consigliabile utilizzare il grasso termoconduttivo al fine di garantire un contatto ottimale fra componente e superficie del dissipatore, in modo particolare quando la superficie del componente è di dimensioni ragguardevoli come ad esempio i moduli IGBT o quando la superficie del dissipatore non è stata spianata.

USING
Thermal conductive greases are chosen for optimize thermal resistance between electronics components and heatsink surface has not a good roughness and flatness.

D

**ISOLANTE PER TO3
INSULATION FOR CASE TO3**

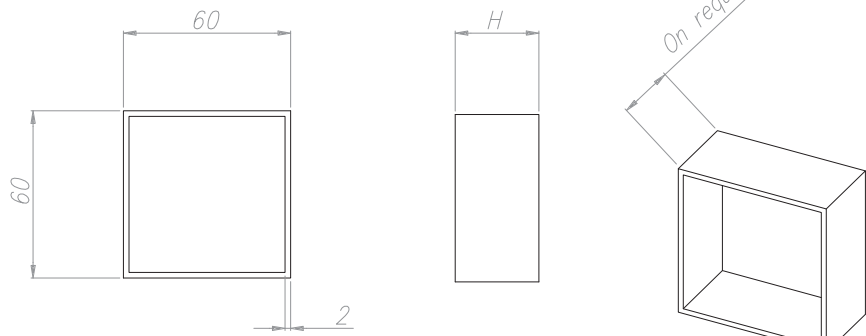
**ISOLANTE PER T220
INSULATION FOR CASE TO220**

Materiale nylon
Material nylon

Materiale nylon
Material nylon

SPACER 60

Aluminium, black anodized, silver on request
 Aluminium, raw on request
 Dimensions H, on request

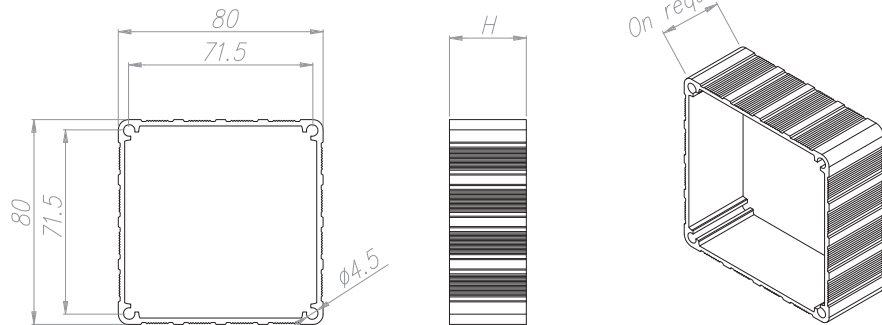


TECNDAL
www.tecnoal.it

A

SPACER 80

Aluminium, black anodized, silver on request
 Aluminium, raw on request
 Dimensions H, on request

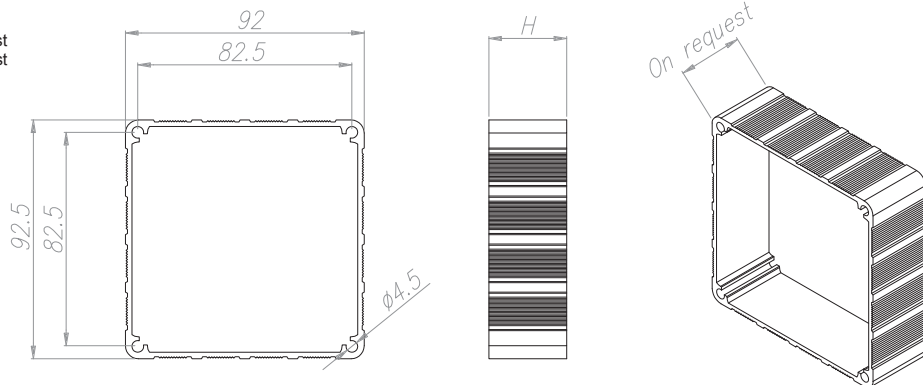


TECNDAL
www.tecnoal.it

B

SPACER 92

Aluminium, black anodized, silver on request
 Aluminium, raw on request
 Dimensions H, on request

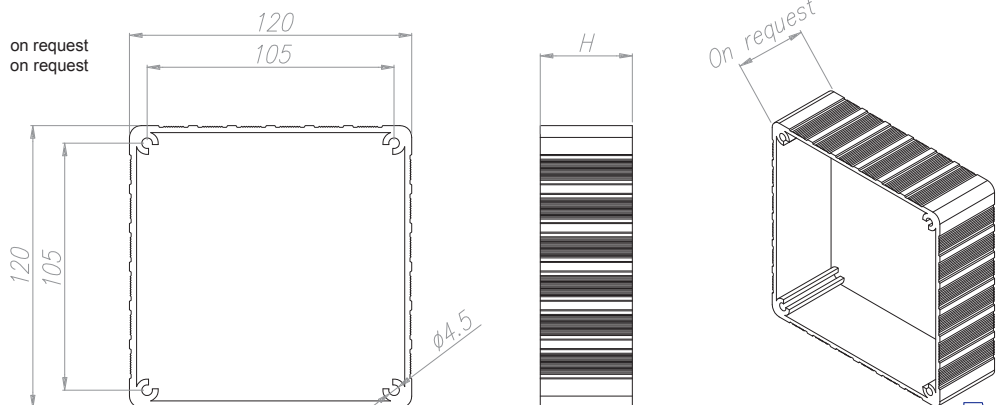


TECNDAL
www.tecnoal.it

C

SPACER 120

Aluminium, black anodized, silver on request
 Aluminium, raw on request
 Dimensions H, on request



TECNDAL
www.tecnoal.it

D